

Supplementary material

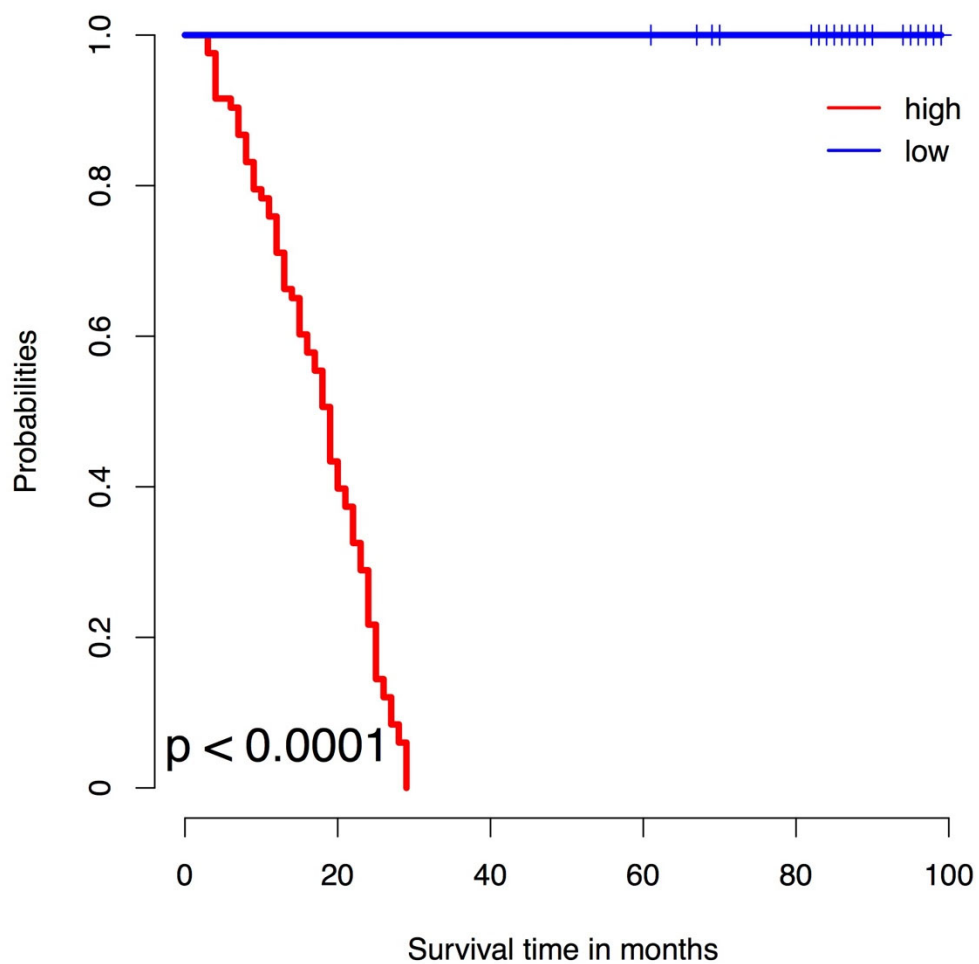


Fig. S1 The survival analysis of 229 patients with bipolar prognosis (red: high risk; blue: low risk).

Table S1: The clinical information of small cell lung cancer (SCLC)

ID	HSP90 β (ng/ml)	Age Group		Gender	Gender		Group
		Age	(0: \leq 60; 1>60)		(Male=1, Female=2)		
1	505.89	62	1	Male	1	SCLC	
2	302.34	56	0	Male	1	SCLC	
3	150.18	40	0	Female	2	SCLC	
4	303.20	52	0	Male	1	SCLC	
5	307.32	69	1	Female	2	SCLC	
6	238.63	72	1	Female	2	SCLC	
7	271.46	71	1	Male	1	SCLC	
8	347.83	66	1	Male	1	SCLC	

9	183.84	50	0	Female	2	SCLC
10	259.23	60	0	Male	1	SCLC
11	366.03	60	0	Male	1	SCLC
12	575.46	42	0	Male	1	SCLC
13	661.23	50	0	Male	1	SCLC
14	450.07	72	1	Female	2	SCLC
15	360.05	47	0	Female	2	SCLC
16	296.48	65	1	Male	1	SCLC
17	202.69	40	0	Male	1	SCLC
18	280.40	54	0	Male	1	SCLC
19	209.55	56	0	Male	1	SCLC
20	121.68	51	0	Male	1	SCLC
21	188.73	61	1	Male	1	SCLC
22	245.87	73	1	Male	1	SCLC
23	277.13	49	0	Male	1	SCLC
24	129.78	66	1	Male	1	SCLC
25	194.05	65	1	Male	1	SCLC
26	295.83	45	0	Male	1	SCLC
27	434.95	54	0	Male	1	SCLC
28	290.40	67	1	Male	1	SCLC
29	40.71	58	0	Male	1	SCLC
30	164.25	43	0	Male	1	SCLC
31	400.94	58	0	Female	2	SCLC
32	174.72	53	0	Male	1	SCLC
33	189.61	53	0	Female	2	SCLC
34	426.94	57	0	Female	2	SCLC
35	175.61	45	0	Male	1	SCLC
36	156.66	53	0	Male	1	SCLC
37	228.51	70	1	Female	2	SCLC
38	251.57	71	1	Male	1	SCLC
39	283.01	53	0	Male	1	SCLC
40	102.75	63	1	Male	1	SCLC
41	210.87	58	0	Female	2	SCLC
42	271.03	55	0	Male	1	SCLC
43	151.07	47	0	Male	1	SCLC
44	393.09	57	0	Female	2	SCLC
45	313.16	59	0	Female	2	SCLC
46	228.07	56	0	Male	1	SCLC
47	134.72	55	0	Male	1	SCLC
48	333.22	53	0	Male	1	SCLC
49	530.86	55	0	Female	2	SCLC
50	436.42	53	0	Male	1	SCLC
51	223.89	65	1	Male	1	SCLC

52	168.93	38	0	Male	1	SCLC
53	267.97	51	0	Male	1	SCLC
54	234.23	58	0	Female	2	SCLC
55	198.93	62	1	Female	2	SCLC
56	150.18	71	1	Female	2	SCLC
57	70.80	77	1	Male	1	SCLC
58	181.17	60	0	Male	1	SCLC
59	270.59	56	0	Male	1	SCLC
60	80.57	47	0	Male	1	SCLC
61	134.72	56	0	Male	1	SCLC
62	134.27	43	0	Female	2	SCLC
63	215.07	75	1	Female	2	SCLC
64	122.58	53	0	Male	1	SCLC
65	336.23	47	0	Female	2	SCLC
66	141.22	64	1	Male	1	SCLC
67	219.70	55	0	Male	1	SCLC
68	121.23	53	0	Male	1	SCLC
69	117.63	42	0	Male	1	SCLC
70	194.05	75	1	Male	1	SCLC
71	168.04	63	1	Male	1	SCLC
72	139.43	76	1	Male	1	SCLC
73	245.43	59	0	Male	1	SCLC
74	290.19	59	0	Male	1	SCLC
75	552.81	60	0	Male	1	SCLC
76	190.28	61	1	Male	1	SCLC
77	167.15	63	1	Female	2	SCLC
78	104.33	34	1	Male	1	SCLC
79	113.13	48	0	Male	1	SCLC
80	166.04	58	0	Female	2	SCLC

Table S2: The detailed information of 671 patients with lung cancer

ID	DFS								Pathologic						
	CEA (ng/ml)	CA125 (U/ml)	cyfra211 (ng/ml)	HSP90 α (ng/ml)	HSP90 β level	OS time (month)	time (month)	OS	DFS	Bipolar patients	Risk result	Risk prediction	(I-LUSC.2; LUAD)	Match HSP90 β	Match Model
1	2.8	12.36	29.09	118.77	low	82	82	1	1		high	high	1	No	Yes
2	17.11	68.45	12.07	20.08	low	50	37	1	1		high	high	2	No	Yes
3	4.26	8.92	3.52	83.88	low	58	6	1	1		high	low	2	No	No
4	1.88	5.53	1.26	193.89	high	99	99	0	0	low-risk	low	low	2	No	Yes
5	1.88	5.73	3.44	75.35	low	99	99	0	0	low-risk	low	low	2	Yes	Yes
6	2.85	7.73	2.05	88.25	low	99	99	0	0	low-risk	low	low	2	Yes	Yes
7	1.27	12.07	6.28	128.61	low	7	6	1	1	high-risk	high	high	1	No	Yes
8	2.11	24.12	2.98	81.01	low	58	31	1	1		high	low	2	No	No
9	2.6	5.53	2.43	48.49	low	99	99	0	0	low-risk	low	high	2	Yes	No
10	1.41	20.23	1.45	226.03	high	78	48	1	1		high	high	2	Yes	Yes
11	11.02	19.92	1.35	171.24	high	45	38	1	1		high	high	2	Yes	Yes
12	1.54	5.24	1.86	81.21	low	99	99	0	0	low-risk	low	low	2	Yes	Yes
13	3.26	27.35	2.07	81.21	low	99	99	0	0	low-risk	low	low	1	Yes	Yes
14	3.45	21	15.51	38.33	low	36	17	1	1		high	high	1	No	Yes
15	3.88	21.67	1.66	194.88	high	77	77	1	1		high	high	2	Yes	Yes
16	1.14	11.42	3.35	186.67	high	99	99	0	1	low-risk	low	low	2	No	Yes
17	22.3	8.74	1.35	274.61	high	58	6	1	1		high	high	2	Yes	Yes
18	9.32	13.08	5.88	52.29	low	99	99	0	0	low-risk	low	high	1	Yes	No
19	0.707	12.89	1.37	328.71	high	77	36	1	1		high	high	2	Yes	Yes
20	2.24	36.71	5.33	251.53	high	4	2	1	1	high-risk	high	high	2	Yes	Yes
21	38.03	17.04	2.73	384.74	high	71	49	1	1		high	high	2	Yes	Yes
22	1.27	22.69	6.43	226.17	high	99	99	0	0	low-risk	low	low	1	No	Yes
23	65.08	86.52	4.83	48.02	low	47	49	1	1		high	high	2	No	Yes
24	2.13	74.26	4.73	137.24	high	99	56	0	1	low-risk	low	high	1	No	No
25	1.83	77.41	2.72	395.48	high	17	17	1	1	high-risk	high	high	1	Yes	Yes
26	2.15	8.98	3.7	82.49	low	32	14	1	1		high	low	1	No	No
27	0.903	8.45	2.14	124.16	low	99	99	0	0	low-risk	low	low	2	Yes	Yes
28	2.78	24.98	5.73	162.69	high	12	2	1	1	high-risk	high	high	1	Yes	Yes
29	2.32	9.81	3.41	193.64	high	99	99	0	0	low-risk	low	low	1	No	Yes
30	2.13	9.92	1.85	88.66	low	99	99	0	0	low-risk	low	low	2	Yes	Yes
31	34.68	39.21	3.91	326.34	high	17	13	1	1	high-risk	high	high	2	Yes	Yes
32	1.29	13.63	17.88	68.24	low	12	7	1	1	high-risk	high	high	1	No	Yes
33	1.86	16.12	5.37	143.16	high	98	98	0	0	low-risk	low	low	1	No	Yes
34	2.79	8.45	1.27	396.28	high	98	98	0	0	low-risk	low	low	1	No	Yes
35	1.32	11.52	1.77	96.75	low	98	98	0	0	low-risk	low	low	1	Yes	Yes
36	16.38	12.13	2.75	236.19	high	47	23	1	1		high	low	2	Yes	No
37	0.947	15.3	5.68	182.39	low	98	98	0	0	low-risk	low	low	1	Yes	Yes
38	3.63	11.49	6.02	148.88	high	18	4	1	1	high-risk	high	high	1	Yes	Yes

39	47	15.76	4.29	124.47	low	98	98	0	0	low-risk	low	low	1	Yes	Yes
40	6447	26.8	24.63	171.44	high	98	98	0	0	low-risk	low	low	1	No	Yes
41	11.17	12.09	3.41	162.48	low	59	59	1	1		high	low	2	No	No
42	447	15.42	6.61	121.44	low	98	98	0	0	low-risk	low	low	1	Yes	Yes
43	1.86	9.75	3.77	263.21	high	26	18	1	1	high-risk	high	high	1	Yes	Yes
44	434	7.81	4.94	285.51	high	98	98	0	0	low-risk	low	low	1	No	Yes
45	234	9.12	5.2	149.27	high	98	98	0	0	low-risk	low	high	1	No	No
46	239	15.12	18.54	75.21	low	98	98	0	0	low-risk	low	low	1	Yes	Yes
47	1.17	142.7	1.67	26.95	low	44	19	1	1		high	low	2	No	No
48	1.36	6.54	1.6	224.71	high	44	34	1	1		high	low	2	Yes	No
49	1.46	7.51	1.21	164.79	high	98	98	0	0	low-risk	low	low	2	No	Yes
50	1.41	29.19	2.11	246.18	high	34	4	1	1		high	low	2	Yes	No
51	2.19	17.12	1.48	91.44	low	11	8	1	1	high-risk	high	low	1	No	No
52	1.79	49	11.44	127.54	low	97	97	0	0	low-risk	low	low	1	Yes	Yes
53	3.34	212.8	11.44	244.39	high	35	35	1	1		high	high	1	Yes	Yes
54	33.61	49.44	5.91	299.84	high	16	8	1	1	high-risk	high	high	2	Yes	Yes
55	8.75	11.49	1.25	319.82	high	42	21	1	1		high	high	2	Yes	Yes
56	4.14	16.39	5.27	131.11	low	97	97	0	0	low-risk	low	high	1	Yes	No
57	1.79	16.46	2.3	167.12	high	56	7	1	1		high	low	1	Yes	No
58	1.74	21.62	3.19	146.15	high	97	97	0	0	low-risk	low	high	2	No	No
59	5.27	117	3.47	263.61	high	97	97	0	0	low-risk	low	low	1	No	Yes
60	1.79	101	6.96	214.71	high	97	97	0	0	low-risk	low	low	1	No	Yes
61	7.17	6.44	4.13	215.84	high	97	97	0	0	low-risk	low	low	2	No	Yes
62	4.15	12.56	4.73	135.86	high	97	97	0	0	low-risk	low	low	1	No	Yes
63	2.45	5.88	1.67	218.66	high	96	96	0	0	low-risk	low	low	1	No	Yes
64	5.97	22.47	2.69	139.62	low	96	18	0	1	low-risk	low	low	2	Yes	Yes
65	1.12	19.42	3	149.84	low	96	96	0	0	low-risk	low	low	2	Yes	Yes
66	20.11	41.81	8.24	66.96	low	9	9	1	1	high-risk	high	high	1	No	Yes
67	2.15	22.13	7.13	141.96	low	21	21	1	1	high-risk	high	low	1	No	No
68	6.754	15.1	1.18	66.45	low	96	96	0	0	low-risk	low	low	2	Yes	Yes
69	1.69	9.59	2.19	423.88	high	97	97	0	0	low-risk	low	low	2	No	Yes
70	23.17	25.45	2.62	179.24	high	21	21	1	1	high-risk	high	high	2	Yes	Yes
71	4.23	8.95	2.31	67.77	low	96	96	0	0	low-risk	low	low	1	Yes	Yes
72	1.89	29.66	2.19	62.99	low	13	13	1	1	high-risk	high	low	2	No	No
73	2.19	16.19	3.8	68.52	low	96	96	0	0	low-risk	low	low	2	Yes	Yes
74	1.14	11.77	2.19	146.74	high	96	96	0	0	low-risk	low	low	2	No	Yes
75	11.74	9.75	2.14	125.97	low	96	96	0	0	low-risk	low	low	1	Yes	Yes
76	1.23	15.44	8.66	26.97	low	26	26	1	1		high	high	1	No	Yes
77	1.72	9.47	1.5	97.51	low	49	18	1	1		high	low	2	No	No
78	4.21	6.95	2.13	216.77	high	96	96	0	0	low-risk	low	low	2	No	Yes
79	48.14	26.76	16.2	62.22	low	41	29	1	1		high	high	2	No	Yes
80	1.25	12.09	3.4	131.46	low	96	96	0	0	low-risk	low	low	1	Yes	Yes
81	1.6	24.59	15.42	141.34	low	49	49	1	1		high	high	1	No	Yes
82	1.99	19.17	3.21	261.39	high	95	95	0	0	low-risk	low	high	1	No	No

83	838	129.8	1842	8666	low	49	45	1	1		high	low	2	No	No
84	471	8.8	336	18227	low	95	95	0	0	low-risk	low	low	2	Yes	Yes
85	141	8.18	1.9	26828	high	95	95	0	0	low-risk	low	low	2	No	Yes
86	488	15.11	8.68	12879	low	46	46	1	1		high	low	1	No	No
87	4127	245.9	2121	5231	low	4	6	1	1	high-risk	high	high	2	No	Yes
88	21	16.15	3989	9626	low	95	95	0	0	low-risk	low	low	1	Yes	Yes
89	818	11.27	1.47	26589	high	32	32	1	1		high	high	2	Yes	Yes
90	224	14.86	2.95	18828	low	95	95	0	0	low-risk	low	low	1	Yes	Yes
91	32	9.22	8.25	18466	high	32	32	1	1		high	high	1	Yes	Yes
92	4.9	16.52	2.62	2951	low	95	35	0	1	low-risk	low	high	2	Yes	No
93	435	13.98	4.96	36815	high	95	95	0	0	low-risk	low	low	1	No	Yes
94	1279	39.68	3.44	7156	low	48	24	1	1		high	high	2	No	Yes
95	1656	18.89	1.2	5456	low	95	95	0	0	low-risk	low	low	2	Yes	Yes
96	341	79.86	2.88	11894	low	18	3	1	1	high-risk	high	low	1	No	No
97	2	9.48	1.45	4821	low	95	95	0	0	low-risk	low	low	1	Yes	Yes
98	129	8.3	3.84	5246	low	95	94	0	1	low-risk	low	low	2	Yes	Yes
99	1642	18.47	2.95	8589	low	95	95	0	0	low-risk	low	low	1	Yes	Yes
100	142	24.29	2.37	11818	low	95	95	0	0	low-risk	low	low	2	Yes	Yes
101	242	5.62	4.43	3836	low	95	95	0	0	low-risk	low	low	1	Yes	Yes
102	431	9.82	4.98	12648	low	37	25	1	1		high	high	2	No	Yes
103	543	21.42	2.81	3172	low	95	95	0	0	low-risk	low	low	2	Yes	Yes
104	481	15.79	3.35	1841	low	13	7	1	1	high-risk	high	high	2	No	Yes
105	843	6.38	1.19	1681	low	24	24	1	1	high-risk	high	low	2	No	No
106	139	13.52	2.38	1451	low	42	13	1	1		high	low	2	No	No
107	71	13.55	1.24	1866	low	97	97	0	0	low-risk	low	low	2	Yes	Yes
108	427	2.38	3.84	23473	high	97	97	0	0	low-risk	low	low	2	No	Yes
109	481	17.71	16.58	14781	high	22	22	1	1	high-risk	high	high	2	Yes	Yes
110	122	16.31	2.13	3892	high	96	96	0	0	low-risk	low	high	2	No	No
111	143	15.98	1.71	14519	high	18	13	1	1	high-risk	high	high	2	Yes	Yes
112	126	29.42	1.68	28466	high	79	66	1	1		high	high	2	Yes	Yes
113	129	18.45	2.7	1834	low	49	34	1	1		high	low	1	No	No
114	141	6.4	1.82	28989	high	96	96	0	0	low-risk	low	low	2	No	Yes
115	288	14.21	5.41	14481	high	19	4	1	1	high-risk	high	high	1	Yes	Yes
116	675	4.65	2.88	2632	high	15	8	1	1	high-risk	high	high	2	Yes	Yes
117	6183	14.72	9.83	13897	low	96	65	0	1	low-risk	low	high	2	Yes	No
118	289	7.71	6	17384	high	96	96	0	0	low-risk	low	low	1	No	Yes
119	589	12.83	1.82	17278	high	96	96	0	0	low-risk	low	low	2	No	Yes
120	142	25.6	3.79	11731	high	29	17	1	1	high-risk	high	high	1	Yes	Yes
121	1189	19.31	3.24	14485	high	22	22	1	1	high-risk	high	high	2	Yes	Yes
122	238	18.89	2.91	8714	low	96	96	0	0	low-risk	low	low	2	Yes	Yes
123	145	5.3	3.67	12885	low	96	96	0	0	low-risk	low	low	2	Yes	Yes
124	142	25.6	7.62	17186	high	95	95	0	0	low-risk	low	high	2	No	No
125	122	7.65	3.88	12485	low	95	95	0	0	low-risk	low	low	2	Yes	Yes
126	184	14.26	3.79	24586	high	95	95	0	0	low-risk	low	low	1	No	Yes

127	231	2940	175	12439	low	74	45	1	1		high	low	2	No	No
128	227	4934	1634	7542	low	15	15	1	1	high-oh	high	low	1	No	No
129	11	1539	21	12789	low	7	7	1	1	high-oh	high	high	1	No	Yes
130	122	740	138	9030	low	95	95	0	0	low-oh	low	low	2	Yes	Yes
131	445	114	247	22511	high	95	95	0	0	low-oh	low	low	2	No	Yes
132	236	2121	121	8943	low	95	95	0	0	low-oh	low	low	1	Yes	Yes
133	144	1944	143	2636	low	95	95	0	0	low-oh	low	low	2	Yes	Yes
134	146	183	143	2643	low	59	46	1	1		high	low	2	No	No
135	1475	1274	7132	12143	high	4	4	1	1	high-oh	high	high	2	Yes	Yes
136	242	435	277	18544	low	52	52	1	1		high	low	2	No	No
137	232	744	136	21975	high	95	95	0	0	low-oh	low	low	2	No	Yes
138	189	2054	4838	21113	high	56	56	1	1		high	high	2	Yes	Yes
139	232	1832	435	17544	high	94	94	0	0	low-oh	low	high	1	No	No
140	179	1442	237	10349	low	94	94	0	0	low-oh	low	low	2	Yes	Yes
141	52	194	439	7230	low	94	94	0	0	low-oh	low	low	2	Yes	Yes
142	288	729	321	48152	high	94	94	0	0	low-oh	low	low	2	No	Yes
143	214	923	134	21439	high	94	94	0	0	low-oh	low	low	2	No	Yes
144	236	2137	2249	74436	high	94	83	0	1	low-oh	low	high	1	No	No
145	529	722	148	22647	high	94	42	0	1	low-oh	low	low	2	No	Yes
146	231	2144	242	27156	high	94	94	0	0	low-oh	low	low	1	No	Yes
147	238	749	344	24314	high	94	94	0	0	low-oh	low	low	1	No	Yes
148	142	432	145	41226	high	58	51	1	1		high	low	2	Yes	No
149	1422	1012	1016	19936	high	4	3	1	1	high-oh	high	high	2	Yes	Yes
150	417	1536	438	14277	high	94	94	0	0	low-oh	low	low	1	No	Yes
151	24	2577	245	5523	low	59	36	1	1		high	low	2	No	No
152	136	419	243	28344	high	72	53	1	1		high	high	2	Yes	Yes
153	1604	539	247	34139	high	90	90	0	0	low-oh	low	low	2	No	Yes
154	1179	1847	247	21643	high	82	82	1	1		high	low	2	Yes	No
155	242	1726	233	7230	low	90	90	0	0	low-oh	low	low	2	Yes	Yes
156	145	2942	531	13848	low	14	14	1	1	high-oh	high	high	1	No	Yes
157	2843	1236	139	42627	high	52	39	1	1		high	low	2	Yes	No
158	143	445	141	9775	low	90	90	0	0	low-oh	low	low	2	Yes	Yes
159	142	626	145	18185	low	90	90	0	0	low-oh	low	low	2	Yes	Yes
160	43	1177	144	17344	high	90	54	0	1	low-oh	low	low	2	No	Yes
161	14	434	47	9534	low	90	90	0	0	low-oh	low	low	1	Yes	Yes
162	136	536	136	2739	low	89	89	0	0	low-oh	low	low	1	Yes	Yes
163	129	1241	137	7841	low	89	89	0	0	low-oh	low	low	2	Yes	Yes
164	738	1874	277	11449	low	89	14	0	1	low-oh	low	low	2	Yes	Yes
165	142	436	134	11038	low	89	89	0	0	low-oh	low	low	2	Yes	Yes
166	434	1343	433	18831	low	44	44	1	1		high	high	2	No	Yes
167	149	2242	737	4230	low	89	89	0	0	low-oh	low	low	1	Yes	Yes
168	1446	1253	53	28512	high	15	4	1	1	high-oh	high	high	2	Yes	Yes
169	136	1338	329	21457	high	57	57	1	1		high	high	1	Yes	Yes
170	4945	1763	248	4534	low	4	4	1	1	high-oh	high	high	2	No	Yes

171	377	79.05	1447	29929	high	8	8	1	1	high-risk	high	high	1	Yes	Yes
172	246	11.17	833	29641	high	56	7	1	1		high	high	1	Yes	Yes
173	9547	29.19	15.5	29236	high	29	13	1	1	high-risk	high	high	2	Yes	Yes
174	249	8.37	345	8712	low	88	88	0	0	low-risk	low	low	2	Yes	Yes
175	137	88.86	1.93	13926	high	41	1	1	1		high	high	2	Yes	Yes
176	229	9.95	242	8236	low	24	5	1	1	high-risk	high	high	2	No	Yes
177	24	5.71	1.92	23917	high	88	88	0	0	low-risk	low	low	1	No	Yes
178	388	7.65	346	18837	low	87	87	0	0	low-risk	low	low	2	Yes	Yes
179	136	17.58	1.76	9838	low	88	88	0	0	low-risk	low	low	1	Yes	Yes
180	135	8.56	1.4	29691	high	88	88	0	0	low-risk	low	high	1	No	No
181	338	22.75	5.92	4932	low	88	88	0	0	low-risk	low	low	1	Yes	Yes
182	414	15.8	344	17371	high	76	44	1	1		high	low	2	Yes	No
183	629	26.76	3.37	17895	high	88	9	1	1		high	high	1	Yes	Yes
184	6889	22.71	6.888	9734	low	87	87	0	0	low-risk	low	low	1	Yes	Yes
185	138	15.21	1.89	14788	high	36	36	0	0		low	high	1	No	No
186	829	85.45	7.37	27344	high	45	34	1	1		high	high	2	Yes	Yes
187	42	75.33	4.34	12631	low	31	29	1	1		high	low	1	No	No
188	147	9.18	1.92	9347	low	87	87	0	0	low-risk	low	low	2	Yes	Yes
189	107.2	54.74	5.96	18831	high	13	1	1	1	high-risk	high	high	2	Yes	Yes
190	179	9.18	1.85	16282	high	71	53	1	1		high	low	2	Yes	No
191	733	21.74	2.7	49125	high	87	87	0	0	low-risk	low	low	2	No	Yes
192	1547	16.44	3.41	18585	high	54	39	1	1		high	low	2	Yes	No
193	337	24.66	4.32	17184	high	22	17	1	1	high-risk	high	high	1	Yes	Yes
194	2833	72.12	2.78	12949	high	27	14	1	1		high	high	2	Yes	Yes
195	7584	55.13	2.89	17454	high	27	27	1	1		high	high	2	Yes	Yes
196	586	17.36	2.81	18174	low	86	86	0	0	low-risk	low	low	2	Yes	Yes
197	2354	3227	6.795	14538	high	46	9	1	1		high	high	1	Yes	Yes
198	939	28.51	8.996	10139	high	55	26	1	1		high	low	2	Yes	No
199	134	9.4	3.14	21282	high	86	86	0	0	low-risk	low	low	1	No	Yes
200	142	21.16	1.88	28881	high	86	86	0	0	low-risk	low	low	1	No	Yes
201	235	4.99	2.37	13879	low	86	86	0	0	low-risk	low	low	2	Yes	Yes
202	142	76.51	6.51	13928	low	86	86	0	0	low-risk	low	low	1	Yes	Yes
203	135	12.45	2.88	18171	high	86	86	0	0	low-risk	low	low	2	No	Yes
204	743	9.16	2.74	22414	high	29	16	1	1	high-risk	high	high	2	Yes	Yes
205	236	18.23	14.86	9139	low	49	49	1	1		high	low	2	No	No
206	111	11.26	5.87	22943	high	32	22	1	1		high	high	1	Yes	Yes
207	483	16.16	2.89	13842	high	27	17	1	1	high-risk	high	high	2	Yes	Yes
208	29	12.64	2.83	13891	high	85	85	0	0	low-risk	low	high	1	No	No
209	142	7.61	2.29	7637	low	85	85	0	0	low-risk	low	low	1	Yes	Yes
210	246	11.23	1.18	9647	low	85	85	0	0	low-risk	low	low	2	Yes	Yes
211	135	15.8	1.43	24575	high	85	85	0	0	low-risk	low	high	1	No	No
212	246	14.4	6.26	16851	high	56	56	1	1		high	high	1	Yes	Yes
213	135	9.36	3.81	9924	low	85	72	0	1	low-risk	low	low	1	Yes	Yes
214	14	29.44	6.589	8147	low	84	84	0	0	low-risk	low	low	2	Yes	Yes

215	426	252	398	28541	high	53	53	1	1		high	low	2	Yes	No
216	245	524	226	36746	high	45	25	1	1		high	low	2	Yes	No
217	4819	3656	829	28894	high	45	45	1	1		high	high	1	Yes	Yes
218	136	4759	647	11279	low	83	83	0	0	low-risk	low	low	1	Yes	Yes
219	245	93	129	17490	high	83	83	0	0	low-risk	low	low	2	No	Yes
220	8956	444	332	18436	high	15	14	1	1	high-risk	high	high	1	Yes	Yes
221	178	1272	188	8976	low	82	82	0	0	low-risk	low	low	2	Yes	Yes
222	166	626	128	28889	high	82	82	0	0	low-risk	low	low	2	No	Yes
223	4623	1758	145	3841	low	79	79	0	1	low-risk	low	low	2	Yes	Yes
224	131	829	129	4585	low	79	79	0	0	low-risk	low	low	2	Yes	Yes
225	32	737	23	18138	high	54	38	1	1		high	low	2	Yes	No
226	186	617	147	11829	low	79	79	0	0	low-risk	low	low	1	Yes	Yes
227	126	753	142	28889	high	79	79	1	1		high	low	2	Yes	No
228	1814	748	216	4849	low	79	79	0	0	low-risk	low	high	2	Yes	No
229	785	4633	545	5880	low	79	79	0	0	low-risk	low	low	2	Yes	Yes
230	187	894	332	12489	high	35	35	1	1		high	low	1	Yes	No
231	115	3124	176	31478	high	44	44	1	1		high	high	1	Yes	Yes
232	832	2286	882	17589	high	79	79	0	0	low-risk	low	high	2	No	No
233	285	844	224	28519	high	79	79	0	0	low-risk	low	low	1	No	Yes
234	189	1733	133	3826	low	79	79	0	0	low-risk	low	low	1	Yes	Yes
235	183	1474	289	18478	high	57	57	1	1		high	high	1	Yes	Yes
236	676	726	473	5785	low	79	79	0	0	low-risk	low	low	2	Yes	Yes
237	422	414	284	18679	low	79	79	0	0	low-risk	low	low	2	Yes	Yes
238	141	439	289	12557	high	57	39	1	1		high	low	2	Yes	No
239	247	174	17	4153	low	47	48	0	1	low-risk	low	high	2	Yes	No
240	187	39	484	11238	low	49	49	0	0	low-risk	low	low	1	Yes	Yes
241	31	9572	635	18323	low	49	49	0	0	low-risk	low	low	1	Yes	Yes
242	24	254	77	11874	high	38	38	1	1		high	high	1	Yes	Yes
243	125	841	473	4813	low	82	82	0	0		low	low	1	Yes	Yes
244	277	416	19	17789	high	49	49	0	0	low-risk	low	low	1	No	Yes
245	889	488	442	8849	low	49	49	0	0	low-risk	low	low	1	Yes	Yes
246	111	3788	336	9512	low	24	24	1	1	high-risk	high	high	1	No	Yes
247	126	1542	135	11226	low	49	49	0	0	low-risk	low	low	2	Yes	Yes
248	134	485	184	23547	high	42	42	1	1		high	low	2	Yes	No
249	411	2124	24	9854	low	49	49	0	0	low-risk	low	low	2	Yes	Yes
250	146	2642	147	21711	high	49	49	0	0	low-risk	low	high	2	No	No
251	149	1653	636	11324	high	26	26	1	1	high-risk	high	high	1	Yes	Yes
252	282	2247	728	28471	high	47	47	1	1		high	high	1	Yes	Yes
253	777	1114	17	13684	low	18	18	1	1	high-risk	high	low	2	No	No
254	882	783	229	4189	low	47	26	0	1	low-risk	low	low	2	Yes	Yes
255	471	536	478	4247	low	54	54	0	0		low	low	2	Yes	Yes
256	185	513	185	14295	high	47	47	0	0	low-risk	low	low	1	No	Yes
257	24	844	175	4585	low	47	47	0	0	low-risk	low	low	2	Yes	Yes
258	733	1847	229	8639	low	56	56	0	0		low	low	2	Yes	Yes

259	413	36.85	434	126.86	low	51	37	1	1		high	low	2	No	No
260	424	24.49	324	51.14	low	40	41	0	0	low-risk	low	low	1	Yes	Yes
261	231	11.39	424	180.38	high	41	41	0	0	low-risk	low	low	1	No	Yes
262	346	21.8	323	87.54	low	41	41	0	0	low-risk	low	low	1	Yes	Yes
263	113.8	185.7	4	179.11	high	19	13	1	1	high-risk	high	high	2	Yes	Yes
264	0.669	15.96	244	382.45	high	49	42	1	1		high	high	2	Yes	Yes
265	1.46	12.65	234	45.32	low	41	41	0	0	low-risk	low	low	2	Yes	Yes
266	8.74	6.68	273	136.94	low	47	21	1	1		high	low	2	No	No
267	347.3	24.38	223	188.84	low	41	41	0	0	low-risk	low	low	2	Yes	Yes
268	1.28	6.71	1.83	393.54	high	41	41	0	0	low-risk	low	low	1	No	Yes
269	2.85	15.51	1.62	94.35	low	45	22	1	1		high	low	2	No	No
270	211	6.25	1.22	136.54	low	53	13	1	1		high	low	1	No	No
271	3.66	26.66	14.76	62.64	low	58	58	0	0		low	low	1	Yes	Yes
272	7.11	6.21	1.63	174.65	high	24	1	1	1	high-risk	high	high	2	Yes	Yes
273	8.78	45.63	2.61	295.76	high	33	21	1	1		high	high	2	Yes	Yes
274	2.41	26.79	1.82	221.31	high	28	19	1	1	high-risk	high	high	2	Yes	Yes
275	16.32	20.71	2.34	249.14	high	34	26	1	1		high	low	2	Yes	No
276	1.34	30.22	1.22	173.65	high	58	58	0	0		low	low	2	No	Yes
277	56.89	37.61	5.26	388.59	high	29	22	1	1	high-risk	high	high	2	Yes	Yes
278	1.49	5.84	1.61	126.72	low	57	57	0	0		low	low	2	Yes	Yes
279	1.2	14.54	2.63	90.95	low	19	8	1	1	high-risk	high	low	1	No	No
280	22.79	41.47	6.88	48.21	low	57	57	0	0		low	high	1	Yes	No
281	2.47	38.84	16.3	138.36	high	57	57	0	0		low	high	1	No	No
282	1.28	12.42	1.62	157.58	high	44	16	1	1		high	low	1	Yes	No
283	2.46	11.23	16.49	265.88	high	32	32	1	1		high	high	1	Yes	Yes
284	3	47.86	3.82	79.61	low	57	57	0	0		low	low	2	Yes	Yes
285	1.26	9.77	11.74	284.71	high	35	35	1	1		high	high	1	Yes	Yes
286	2.82	16.51	2.88	86.97	low	56	56	0	0		low	low	2	Yes	Yes
287	6.45	14.66	5.82	35.83	low	56	56	0	0		low	high	2	Yes	No
288	55.14	18.1	3.67	124.92	low	56	56	0	0		low	low	2	Yes	Yes
289	1.44	11.76	4.49	223.19	high	25	25	1	1	high-risk	high	high	1	Yes	Yes
290	7.84	13.4	2.32	139.27	high	56	56	0	0		low	high	2	No	No
291	4.1	14.32	3.88	424.46	high	31	31	1	1		high	low	1	Yes	No
292	2.47	15.71	4.23	188.27	low	56	56	0	0		low	low	2	Yes	Yes
293	0.633	6.62	1.45	56.49	low	56	56	0	0		low	low	2	Yes	Yes
294	3.67	15.45	5.22	227.89	high	35	35	1	1		high	high	1	Yes	Yes
295	1.45	46.1	1.77	294.91	high	29	11	1	1	high-risk	high	high	1	Yes	Yes
296	0.992	13.16	0.966	76.36	low	55	55	0	0		low	low	2	Yes	Yes
297	4.44	11.54	1.91	129.87	low	56	43	1	1		high	low	2	No	No
298	13.82	24.42	2.88	86.16	low	55	55	0	0		low	high	2	Yes	No
299	1.6	7.79	2.15	93.14	low	55	55	0	0		low	low	2	Yes	Yes
300	1.42	21.17	1.44	62.35	low	55	55	0	0		low	low	2	Yes	Yes
301	2.46	8.42	3.42	245.88	high	48	48	0	0		low	low	1	No	Yes
302	86.44	6.27	2.82	161.57	high	48	48	0	0		low	low	2	No	Yes

303	213	922	92	13665	low	48	48	0	0		low	high	1	Yes	No
304	1042	2936	625	14540	high	50	50	1	1		high	high	1	Yes	Yes
305	142	1275	18	42027	high	48	48	0	0		low	low	1	No	Yes
306	276	624	422	12036	low	48	48	0	0		low	low	2	Yes	Yes
307	0701	706	1188	12895	low	12	9	1	1	high-60k	high	high	1	No	Yes
308	441	1436	188	22952	high	48	48	0	0		low	high	1	No	No
309	0653	1129	29	13054	low	51	51	0	0		low	low	2	Yes	Yes
310	0675	1009	178	10034	low	43	43	0	0		low	low	2	Yes	Yes
311	647	747	629	12962	low	48	48	0	0		low	high	1	Yes	No
312	385	1083	406	20588	high	48	48	0	0		low	low	2	No	Yes
313	0793	515	275	8537	low	48	48	0	0		low	low	2	Yes	Yes
314	0855	678	139	7725	low	48	48	0	0		low	low	1	Yes	Yes
315	212	1166	372	7261	low	16	10	1	1	high-60k	high	low	2	No	No
316	137	1545	265	20836	high	47	47	0	0		low	low	2	No	Yes
317	147	8	245	10088	high	47	47	0	0		low	low	1	No	Yes
318	238	1003	779	6537	low	27	27	1	1	high-60k	high	high	1	No	Yes
319	248	1043	339	21142	high	47	47	0	0		low	high	2	No	No
320	549	1743	438	20439	high	47	47	0	0		low	low	2	No	Yes
321	588	817	284	3243	low	47	47	0	0		low	low	2	Yes	Yes
322	236	84	135	11761	low	47	8	0	1		low	low	2	Yes	Yes
323	1042	1254	543	9299	low	7	7	1	1	high-60k	high	high	1	No	Yes
324	242	647	524	11940	high	24	12	1	1	high-60k	high	high	2	Yes	Yes
325	147	498	175	20237	high	47	47	0	0		low	low	1	No	Yes
326	288	1145	151	13280	low	48	48	0	0		low	low	2	Yes	Yes
327	248	1036	145	20073	high	47	47	0	0		low	high	1	No	No
328	143	1033	443	17332	high	47	47	0	0		low	low	2	No	Yes
329	137	1152	215	5683	low	3	3	1	1	high-60k	high	low	2	No	No
330	449	2139	437	23923	high	47	47	0	0		low	low	1	No	Yes
331	113	1042	224	6836	low	47	47	0	0		low	low	2	Yes	Yes
332	221	562	132	7289	low	47	47	0	0		low	low	2	Yes	Yes
333	571	1072	332	13929	high	47	13	0	1		low	high	2	No	No
334	574	1072	223	14415	high	46	46	0	0		low	low	2	No	Yes
335	11	1632	136	11939	low	9	9	1	1	high-60k	high	low	2	No	No
336	646	1009	182	12482	low	46	46	0	0		low	low	2	Yes	Yes
337	471	1536	172	10048	high	19	17	1	1	high-60k	high	high	2	Yes	Yes
338	0633	1070	346	20580	high	22	15	1	1	high-60k	high	high	2	Yes	Yes
339	0561	1029	132	22232	high	46	46	0	0		low	high	2	No	No
340	471	1536	172	9632	low	19	17	1	1	high-60k	high	low	2	No	No
341	178	1216	283	6171	low	46	46	0	0		low	low	2	Yes	Yes
342	0214	1034	225	23129	high	46	22	0	1		low	low	2	No	Yes
343	0696	842	143	10515	low	46	46	0	0		low	low	2	Yes	Yes
344	149	710	442	12162	low	46	46	0	0		low	low	1	Yes	Yes
345	0696	842	143	11047	low	46	46	0	0		low	low	2	Yes	Yes
346	2244	2976	588	26280	high	10	10	1	1	high-60k	high	high	2	Yes	Yes

347	349	677	332	17949	high	46	46	0	0	low	low	2	No	Yes	
348	347	948	34	7935	low	46	46	0	0	low	low	1	Yes	Yes	
349	349	2252	546	9943	low	46	46	0	0	low	low	1	Yes	Yes	
350	473	670	100	4242	low	46	46	0	0	low	low	2	Yes	Yes	
351	496	1445	432	28895	high	36	39	1	1	high	low	2	Yes	No	
352	312	1657	809	23633	high	46	8	0	1	low	high	1	No	No	
353	285	884	139	7720	low	46	46	0	0	low	low	1	Yes	Yes	
354	945	8933	545	8452	low	24	24	1	1	high-048	high	high	1	No	Yes
355	211	1525	527	23838	high	46	46	0	0	low	high	1	No	No	
356	139	94	12	7938	low	46	46	0	0	low	low	2	Yes	Yes	
357	8996	1534	139	38642	high	46	46	0	0	low	high	2	No	No	
358	242	803	238	4830	low	46	46	0	0	low	high	2	Yes	No	
359	1602	1532	454	24471	high	46	46	1	1	high	low	2	Yes	No	
360	131	2149	209	3832	low	45	45	0	0	low	low	1	Yes	Yes	
361	388	1808	406	4584	low	3	3	1	1	high-048	high	high	1	No	Yes
362	8475	3809	179	8336	low	42	42	0	0	low	low	2	Yes	Yes	
363	8475	3809	179	8634	low	42	42	0	0	low	low	2	Yes	Yes	
364	136	897	272	11242	low	43	43	0	0	low	low	1	Yes	Yes	
365	133	4642	238	3823	low	45	45	0	0	low	low	2	Yes	Yes	
366	135	4642	236	12154	low	45	45	0	0	low	low	2	Yes	Yes	
367	137	2136	232	13931	high	34	34	0	0	low	low	2	No	Yes	
368	19	1139	248	23927	high	45	45	0	0	low	low	2	No	Yes	
369	31	3809	144	53789	high	45	45	0	0	low	low	1	No	Yes	
370	435	1439	236	26247	high	45	45	0	0	low	low	2	No	Yes	
371	289	5169	337	12517	low	45	45	0	0	low	low	1	Yes	Yes	
372	324	4247	349	18533	high	39	39	1	1	high-048	high	high	1	Yes	Yes
373	486	3943	27	4747	low	9	9	1	1	high-048	high	high	2	No	Yes
374	247	3474	3822	12239	high	45	9	0	1	low	high	2	No	No	
375	7242	1432	337	12439	low	45	45	0	0	low	low	2	Yes	Yes	
376	242	639	231	18889	high	44	44	0	0	low	low	2	No	Yes	
377	242	639	231	21548	high	44	44	0	0	low	low	2	No	Yes	
378	479	821	347	18974	high	9	9	1	1	high-048	high	high	2	Yes	Yes
379	136	84	341	9525	low	44	44	0	0	low	low	1	Yes	Yes	
380	111	3948	545	17989	high	26	26	1	1	high-048	high	high	1	Yes	Yes
381	142	843	148	12862	low	44	44	0	0	low	low	2	Yes	Yes	
382	442	1536	432	3837	low	44	44	0	0	low	low	1	Yes	Yes	
383	242	1237	15	11446	low	44	44	0	0	low	low	1	Yes	Yes	
384	245	1345	2239	23644	high	44	44	0	0	low	high	2	No	No	
385	176	674	546	3834	high	26	26	1	1	high-048	high	high	1	Yes	Yes
386	245	284	173	13192	low	11	5	1	1	high-048	high	high	2	No	Yes
387	147	2745	111	12247	low	44	44	0	0	low	low	2	Yes	Yes	
388	422	494	546	13733	low	21	21	1	1	high-048	high	high	1	No	Yes
389	244	3846	539	28345	high	44	44	0	0	low	high	1	No	No	
390	173	545	536	14136	low	44	33	0	1	low	low	2	Yes	Yes	

391	432	4541	1.75	243.14	high	44	44	0	0		low	high	2	No	No
392	439	478	1.22	80.90	low	44	44	0	0		low	low	2	Yes	Yes
393	6769	777	6.855	144.84	high	44	44	0	0		low	high	1	No	No
394	234	437	1.28	70.44	low	45	45	0	0		low	low	2	Yes	Yes
395	1477	1449	2.94	145.58	high	45	45	0	0		low	high	2	No	No
396	224	648	2.88	115.81	low	45	45	0	0		low	low	2	Yes	Yes
397	112	1412	1.74	145.58	high	45	45	0	0		low	high	2	No	No
398	62	1677	6.866	28.58	low	45	45	0	0		low	low	2	Yes	Yes
399	2	1676	1.77	72.69	low	45	45	0	0		low	low	2	Yes	Yes
400	222	1234	1.8	72.86	low	45	45	0	0		low	low	1	Yes	Yes
401	242	2047	6.86	199.97	high	4	4	1	1	high-64	high	high	1	Yes	Yes
402	142	1776	1.8	146.82	low	39	32	1	1		high	low	2	No	No
403	693	657	1.28	125.93	low	45	45	0	0		low	low	2	Yes	Yes
404	432	1645	2.22	31.54	low	33	33	1	1		high	high	2	No	Yes
405	693	1522	1.3	66.78	low	45	45	0	0		low	low	2	Yes	Yes
406	6969	648	2.95	144.97	high	45	45	0	0		low	high	2	No	No
407	432	1334	2.35	142.56	high	45	45	0	0		low	low	2	No	Yes
408	327	1585	2.35	65.88	low	45	45	0	0		low	low	1	Yes	Yes
409	133	1234	3.33	71.49	low	45	45	0	0		low	low	2	Yes	Yes
410	6323	62.8	1.85	89.52	low	45	45	0	0		low	high	2	Yes	No
411	238	645	6.85	98.53	low	45	45	0	0		low	high	2	Yes	No
412	236	36.4	2.76	57.67	low	45	45	0	0		low	low	2	Yes	Yes
413	236	36.4	2.76	36.41	low	45	45	0	0		low	low	2	Yes	Yes
414	642	1749	3.76	49.68	low	45	32	0	1		low	high	2	Yes	No
415	245	1752	2.44	298.41	high	13	8	1	1	high-64	high	high	2	Yes	Yes
416	147	1745	3.45	61.58	low	45	24	0	1		low	low	2	Yes	Yes
417	147	132	2.14	149.66	low	45	45	0	0		low	low	1	Yes	Yes
418	147	1642	1.8	45.82	low	45	45	0	0		low	low	2	Yes	Yes
419	247	1536	12.54	235.51	high	49	49	0	0		low	high	1	No	No
420	126	2165	4.15	226.17	high	49	49	0	0		low	low	1	No	Yes
421	124	1642	16.23	87.33	low	49	49	0	0		low	low	1	Yes	Yes
422	242	1626	2.81	63.99	low	49	49	0	0		low	low	2	Yes	Yes
423	6947	1197	1.46	126.19	low	49	49	0	0		low	low	2	Yes	Yes
424	679	1671	3.94	172.67	high	49	49	0	0		low	low	2	No	Yes
425	6948	1885	3.21	126.87	low	49	49	0	0		low	low	1	Yes	Yes
426	1.6	1236	2.15	162.58	low	49	23	0	1		low	low	2	Yes	Yes
427	248	177	1.8	173.44	high	49	49	0	0		low	high	2	No	No
428	449	1622	2.15	37.94	low	49	49	0	0		low	low	2	Yes	Yes
429	161.2	2526	1.78	46.56	high	56	18	1	1		high	high	2	Yes	Yes
430	144	651	1.54	288.65	high	29	22	1	1	high-64	high	high	2	Yes	Yes
431	1947	1612	11.62	49.83	low	31	14	1	1		high	low	1	No	No
432	146	645	2.45	117.62	high	49	49	0	0		low	low	1	No	Yes
433	242	646	3.36	36.22	low	39	39	0	0		low	high	2	Yes	No
434	186	676	1.8	121.37	low	39	39	0	0		low	low	2	Yes	Yes

435	130	31.4	1.37	94.46	low	39	39	0	0	low	low	2	Yes	Yes
436	217	12.27	1.37	83.89	low	39	39	0	0	low	low	2	Yes	Yes
437	5	38.63	5	144.49	high	37	37	0	0	low	high	2	No	No
438	237	11.62	1.38	82.56	low	39	39	0	0	low	low	2	Yes	Yes
439	178	5.89	2.67	95.44	low	36	24	0	1	low	low	2	Yes	Yes
440	588	9.13	2.39	142.56	high	39	39	0	0	low	low	2	No	Yes
441	185	11.09	1.34	114.68	low	39	39	0	0	low	low	2	Yes	Yes
442	115	8.82	1.79	48.89	low	39	39	0	0	low	low	1	Yes	Yes
443	181	38.83	2.31	275.29	high	41	24	0	1	low	low	2	No	Yes
444	341	36.19	3.41	162.89	high	40	40	0	0	low	high	1	No	No
445	111	245.1	2.38	126.87	low	40	40	0	0	low	low	2	Yes	Yes
446	134	32.44	2.89	226.82	high	40	40	0	0	low	high	1	No	No
447	212	99.77	2.61	119.79	low	38	21	1	1	high	low	2	No	No
448	6596	11.88	1.17	287.82	high	40	40	0	0	low	high	2	No	No
449	185	12.42	1.28	144.13	high	40	40	0	0	low	high	2	No	No
450	56.7	12.17	4.81	284.59	high	40	40	0	0	low	low	2	No	Yes
451	132	8.49	6.31	179.39	high	34	34	1	1	high	high	1	Yes	Yes
452	545	7.62	3	71.21	low	40	40	0	0	low	low	1	Yes	Yes
453	133	39.92	2.67	438.43	high	40	40	0	0	low	low	1	No	Yes
454	284	17.51	3.66	154.56	high	12	11	1	1	high-high	high	2	Yes	Yes
455	141	6.38	3.11	149.67	high	39	17	0	1	low	high	2	No	No
456	121	26.21	2.81	167.55	low	39	8	0	1	low	low	1	Yes	Yes
457	1979	49.13	6.12	34.41	low	39	39	0	1	low	high	2	Yes	No
458	249	30.88	2.63	145.28	high	39	11	0	1	low	high	2	No	No
459	1132	13.73	4.67	212.45	high	39	39	0	0	low	low	2	No	Yes
460	76.7	28.47	2.36	248.23	high	39	27	0	1	low	high	2	No	No
461	123	15.88	2.26	283.44	high	39	39	0	0	low	low	1	No	Yes
462	133	38.91	2.29	188.44	high	39	39	0	0	low	low	2	No	Yes
463	231	14.18	2.31	146.76	low	36	14	1	1	high	low	1	No	No
464	236	11	1.89	248.35	high	38	38	0	0	low	low	2	No	Yes
465	542	38.42	1.36	88.94	low	38	28	0	0	low	low	2	Yes	Yes
466	185	9.99	1.78	47.32	low	38	38	0	0	low	low	2	Yes	Yes
467	134	9.94	2.1	89.79	low	38	38	0	0	low	low	2	Yes	Yes
468	231	11.72	3.86	37.59	low	38	38	0	0	low	high	2	Yes	No
469	13	72.31	1.17	137.37	high	38	26	0	1	low	low	2	No	Yes
470	6985	11.48	2.67	238.88	high	38	28	0	0	low	low	2	No	Yes
471	716	74.86	1.36	78.32	low	38	38	0	0	low	low	2	Yes	Yes
472	136	38.44	1.84	113.69	low	37	37	0	0	low	low	1	Yes	Yes
473	1896	18.14	2.86	89.84	low	37	37	0	0	low	low	2	Yes	Yes
474	122	9.41	1.74	266.61	high	37	37	0	0	low	low	2	No	Yes
475	53	14.32	4.24	38.76	low	37	37	0	0	low	low	2	Yes	Yes
476	122	9.41	1.74	271.48	high	37	37	0	0	low	low	2	No	Yes
477	1896	18.14	2.86	99.42	low	37	37	0	0	low	low	2	Yes	Yes
478	1382	15.56	1.84	57.71	low	37	37	0	0	low	low	2	Yes	Yes

479	232	9.1	4.86	85.36	low	37	36	0	1		low	low	2	Yes	Yes
480	242	17.74	1.9	108.17	high	37	37	0	0		low	high	2	No	No
481	879	26.83	4.44	186.28	high	37	4	1	1	high-risk	high	high	NA	Yes	Yes
482	141	12.82	2.88	114.67	low	37	37	0	0		low	low	2	Yes	Yes
483	234	12.79	1.87	104.74	high	37	37	0	0		low	high	2	No	No
484	138	9.85	2.25	106.65	high	37	37	0	0		low	high	2	No	No
485	136	29.88	2.81	104.88	high	37	37	0	0		low	high	2	No	No
486	247	12.24	5.1	102.45	high	37	37	0	0		low	high	2	No	No
487	244	19.86	3.28	108.28	low	37	37	0	0		low	low	2	Yes	Yes
488	176	17.87	2.24	126.52	high	28	28	1	1	high-risk	high	high	1	Yes	Yes
489	247	12.24	5.1	111.92	low	35	35	0	0		low	high	2	Yes	No
490	176	17.87	2.24	109.29	high	32	26	1	1		high	low	2	Yes	No
491	142	7.77	2.87	214.87	high	37	37	0	0		low	low	2	No	Yes
492	232	7.8	2.31	208.59	high	37	37	0	0		low	low	1	No	Yes
493	8.5	11.49	5.26	39.55	low	8	8	1	1	high-risk	high	high	2	No	Yes
494	175	9.86	2.22	121.37	low	37	37	0	0		low	low	1	Yes	Yes
495	231	7.76	2.39	116.87	high	37	37	0	0		low	high	2	No	No
496	232	9.1	4.86	75.86	low	37	36	0	1		low	low	2	Yes	Yes
497	231	7.76	2.39	105.86	high	37	37	0	0		low	low	2	No	Yes
498	17	18.53	1.81	74.88	low	37	37	0	0		low	low	2	Yes	Yes
499	4	11.34	2.87	108.44	high	37	37	0	0		low	low	2	No	Yes
500	231	16.61	1.4	95.68	low	37	37	0	0		low	low	2	Yes	Yes
501	347	18.26	4.46	123.94	low	37	37	0	0		low	low	2	Yes	Yes
502	147	18.26	4.46	123.79	low	37	37	0	0		low	low	2	Yes	Yes
503	319	13.87	11.2	81.12	low	37	37	0	0		low	high	2	Yes	No
504	176	12.87	2.82	103.68	high	37	37	0	0		low	high	2	No	No
505	845	13.45	1.76	488.89	high	37	37	0	0		low	low	2	No	Yes
506	12	11.49	2.88	101.27	high	25	11	1	1	high-risk	high	high	2	Yes	Yes
507	6857	7.87	1.22	248.83	high	37	37	0	0		low	low	1	No	Yes
508	6.984	41.54	2.9	117.12	high	37	37	0	0		low	high	1	No	No
509	148	18.26	2.22	173.59	high	37	37	0	0		low	low	2	No	Yes
510	442	18.53	4.4	101.85	low	37	25	0	1		low	low	2	Yes	Yes
511	417	23.32	2.13	239.85	high	37	34	0	1		low	low	2	No	Yes
512	176	7.88	1.77	218.25	high	37	37	0	0		low	low	2	No	Yes
513	172	12.82	7.25	416.15	high	25	14	1	1	high-risk	high	high	2	Yes	Yes
514	414	18.88	2.25	148.76	high	32	25	1	1		high	high	2	Yes	Yes
515	145	17.3	5.76	201.86	high	37	37	0	0		low	high	2	No	No
516	384	17.52	1.23	247.87	high	36	36	0	0		low	high	2	No	No
517	144	28	2.84	87.85	low	37	37	0	0		low	low	2	Yes	Yes
518	214	23.43	12.82	128.47	low	36	36	0	0		low	low	1	Yes	Yes
519	249	12.15	2.89	63.82	low	38	38	0	0		low	low	2	Yes	Yes
520	146	9.82	3.29	388.85	high	21	11	1	1	high-risk	high	high	2	Yes	Yes
521	447	9.87	4.84	217.82	high	36	18	1	1		high	low	NA	Yes	No
522	124	17.28	1.96	168.85	high	36	36	0	0		low	high	2	No	No

523	689	1542	276	27486	high	36	36	0	0	low	low	2	No	Yes
524	171	1253	241	21688	high	37	37	0	0	low	low	2	No	Yes
525	435	618	146	28843	high	36	36	0	0	low	low	2	No	Yes
526	143	2646	158	3891	low	36	36	0	0	low	low	2	Yes	Yes
527	229	14	342	22249	high	36	29	0	1	low	low	2	No	Yes
528	6968	15	198	23839	high	36	36	0	0	low	low	2	No	Yes
529	336	1191	287	31154	high	36	36	0	0	low	high	2	No	No
530	13	131	278	13889	high	36	27	0	1	low	high	2	No	No
531	138	2648	348	8733	low	36	27	0	1	low	low	2	Yes	Yes
532	281	2248	185	37289	high	36	36	0	1	low	high	2	No	No
533	147	435	248	3426	low	36	23	0	1	low	low	2	Yes	Yes
534	14	711	22	7140	low	36	23	0	1	low	low	2	Yes	Yes
535	272	778	332	18343	high	36	36	0	0	low	low	2	No	Yes
536	14	442	348	28387	high	36	36	0	0	low	low	2	No	Yes
537	4273	3459	486	6190	low	25	1	1	1	high-low	high	2	No	Yes
538	448	854	328	23229	high	36	36	0	0	low	low	2	No	Yes
539	589	113	131	21238	high	36	4	0	1	low	high	2	No	No
540	24	9817	8927	17867	high	36	4	0	1	low	low	2	No	Yes
541	173	442	142	23845	high	32	14	1	1	high	low	2	Yes	No
542	29	838	342	43845	high	34	24	1	1	high	low	2	Yes	No
543	529	1263	383	38834	high	36	36	0	0	low	high	2	No	No
544	244	3897	177	34488	high	36	36	0	0	low	high	2	No	No
545	234	2239	544	17645	high	36	19	0	1	low	high	1	No	No
546	234	2239	544	7140	low	28	18	0	0	low	low	2	Yes	Yes
547	145	122	345	13648	low	36	36	0	0	low	low	2	Yes	Yes
548	243	1946	342	3736	low	36	36	0	0	low	high	1	Yes	No
549	244	1842	343	34715	high	36	36	0	0	low	high	2	No	No
550	388	1671	595	23839	high	36	36	0	0	low	high	2	No	No
551	175	1838	24	21474	high	36	36	0	0	low	low	1	No	Yes
552	4871	1242	311	8724	low	36	36	0	0	low	low	2	Yes	Yes
553	127	719	388	14825	high	36	36	0	0	low	high	2	No	No
554	435	164	145	8555	low	36	36	0	0	low	low	2	Yes	Yes
555	334	838	226	38718	high	25	25	1	1	high-low	high	1	Yes	Yes
556	129	1197	1448	31142	high	36	36	0	0	low	high	1	No	No
557	318	2742	319	24843	high	36	36	0	0	low	high	2	No	No
558	311	4644	23	12642	low	36	36	0	0	low	high	2	Yes	No
559	223	1529	346	28874	high	36	36	0	0	low	low	2	No	Yes
560	171	794	32	13355	low	36	36	0	0	low	low	2	Yes	Yes
561	171	794	32	18458	high	36	36	0	0	low	low	2	No	Yes
562	42	117	249	7813	low	36	36	0	0	low	low	2	Yes	Yes
563	139	1142	157	21217	high	36	36	0	0	low	high	2	No	No
564	6951	2587	118	33623	high	36	4	0	1	low	low	2	No	Yes
565	51	2838	323	9843	low	36	3	0	1	low	low	NA	Yes	Yes
566	133	4838	234	33442	high	36	36	0	0	low	high	2	No	No

567	238	893	49	17732	high	36	36	0	0	low	high	2	No	No	
568	141	1007	448	27638	high	36	36	0	0	low	low	2	No	Yes	
569	439	5197	164	28636	high	36	36	0	0	low	low	2	No	Yes	
570	147	5442	1202	13853	high	36	36	0	0	low	high	1	No	No	
571	139	1148	14	21978	high	36	36	0	0	low	high	2	No	No	
572	135	1007	376	12734	high	36	36	0	0	low	high	2	No	No	
573	145	788	779	24345	high	36	36	0	0	low	low	2	No	Yes	
574	147	3023	145	23981	high	25	12	1	1	high-med	high	high	2	Yes	Yes
575	137	596	236	13869	high	35	35	0	0	low	low	2	No	Yes	
576	2895	1512	25	24595	high	36	11	1	1	high	low	2	Yes	No	
577	186	1639	242	17927	high	36	36	0	0	low	high	2	No	No	
578	144	1241	212	24788	high	36	36	0	0	low	low	2	No	Yes	
579	156	2045	67	9697	low	35	35	0	0	low	low	1	Yes	Yes	
580	146	1040	204	28139	high	35	35	0	0	low	low	2	No	Yes	
581	243	944	494	14281	high	25	9	1	1	high-med	high	high	1	Yes	Yes
582	222	892	236	18891	high	35	35	0	0	low	low	2	No	Yes	
583	279	646	345	28881	high	35	35	0	0	low	low	2	No	Yes	
584	247	1838	493	13349	high	35	35	0	0	low	high	1	No	No	
585	234	43	217	12867	high	35	27	0	1	low	low	2	No	Yes	
586	16	921	431	11741	low	35	35	0	0	low	low	2	Yes	Yes	
587	0574	2240	239	6645	low	35	35	0	0	low	low	2	Yes	Yes	
588	0511	1214	248	12472	low	35	35	0	0	low	low	2	Yes	Yes	
589	237	945	245	19539	high	35	1	0	1	low	low	2	No	Yes	
590	126	194	249	9723	low	35	35	0	0	low	low	2	Yes	Yes	
591	135	1442	149	22349	high	35	35	0	0	low	high	2	No	No	
592	424	1526	379	24629	high	35	35	0	0	low	high	2	No	No	
593	141	1691	45	18428	high	35	35	0	0	low	low	1	No	Yes	
594	142	1023	19	9833	low	35	35	0	0	low	low	2	Yes	Yes	
595	232	2167	146	4249	low	35	35	0	0	low	low	2	Yes	Yes	
596	137	449	445	23677	high	35	35	0	0	low	low	2	No	Yes	
597	235	939	224	24788	high	35	35	0	0	low	low	2	No	Yes	
598	145	2132	177	3232	low	35	24	0	1	low	high	2	Yes	No	
599	1439	6479	229	6744	low	34	34	0	0	low	high	2	Yes	No	
600	642	634	245	19646	high	34	34	0	0	low	low	2	No	Yes	
601	0932	672	221	13335	high	34	34	0	0	low	high	2	No	No	
602	289	2540	227	22926	high	34	25	0	1	low	high	2	No	No	
603	172	2675	246	14289	low	32	13	1	1	high	high	2	No	Yes	
604	0932	672	221	17449	high	34	34	0	0	low	low	2	No	Yes	
605	0444	1256	214	46891	high	33	33	0	0	low	low	2	No	Yes	
606	0971	2748	244	7441	low	33	33	0	0	low	low	2	Yes	Yes	
607	149	1046	515	3245	low	33	33	0	0	low	high	2	Yes	No	
608	137	1580	175	18945	low	33	33	0	0	low	low	2	Yes	Yes	
609	149	2915	237	3476	low	33	33	0	0	low	low	2	Yes	Yes	
610	16	1015	276	4625	low	33	33	0	0	low	low	2	Yes	Yes	

611	1.72	3818	2.39	5249	low	33	33	0	0	low	low	2	Yes	Yes
612	0.963	2252	2.13	8631	low	33	33	0	0	low	low	2	Yes	Yes
613	5.55	1164	2.25	7432	low	33	36	0	1	low	low	2	Yes	Yes
614	4.89	6.7	2.25	3560	low	33	33	0	0	low	low	2	Yes	Yes
615	3.89	2148	2.44	5908	low	33	33	0	0	low	high	2	Yes	No
616	1.6	1526	4.67	5182	low	33	33	0	0	low	low	1	Yes	Yes
617	3.24	1114	5.31	3531	low	33	33	0	0	low	high	1	Yes	No
618	1.95	6243	1.14	4191	low	33	33	0	0	low	low	2	Yes	Yes
619	1.38	943	4.13	23248	high	32	32	0	0	low	low	2	No	Yes
620	2.11	1226	1.47	29141	high	32	32	0	1	low	high	2	No	No
621	2.35	2254	2.44	28439	high	32	32	0	0	low	high	2	No	No
622	1.87	3814	1.6	17371	high	32	32	0	0	low	high	2	No	No
623	1.41	1597	3.68	13842	low	32	32	0	0	low	low	2	Yes	Yes
624	5.89	13.3	2.71	23215	high	32	32	0	0	low	low	2	No	Yes
625	6.15	1243	1.86	4881	low	32	32	0	0	low	low	2	Yes	Yes
626	5114	744	2.43	23248	high	32	32	0	0	low	low	2	No	Yes
627	2.29	3918	2.96	19937	high	32	34	0	1	low	low	2	No	Yes
628	1.93	1342	2.45	13681	low	31	31	0	0	low	low	1	Yes	Yes
629	0.811	837	3.32	13848	low	32	32	0	0	low	low	2	Yes	Yes
630	3.6	1123	1.88	13484	low	32	32	0	0	low	low	2	Yes	Yes
631	0.695	2844	2.8	3939	low	32	32	0	0	low	low	2	Yes	Yes
632	3.82	688	3.23	4624	low	31	31	0	0	low	low	2	Yes	Yes
633	1.66	3655	2.44	7888	low	31	31	0	0	low	low	2	Yes	Yes
634	0.529	523	1.65	3176	low	31	31	0	0	low	low	2	Yes	Yes
635	4.15	1477	2.44	28277	high	31	31	0	0	low	low	2	No	Yes
636	1.88	4832	3.39	12314	low	31	31	0	0	low	low	2	Yes	Yes
637	3.43	487	2.47	4591	low	31	31	0	0	low	high	2	Yes	No
638	1.7	1232	1.31	7425	low	31	31	0	0	low	low	2	Yes	Yes
639	1.95	834	2.72	3680	low	31	31	0	0	low	high	2	Yes	No
640	1.95	834	2.72	3721	low	31	31	0	0	low	high	2	Yes	No
641	1.7	1232	1.31	4812	low	31	31	0	0	low	low	2	Yes	Yes
642	1.71	753	4.18	16515	low	31	31	0	0	low	low	2	Yes	Yes
643	3.47	2439	8.11	18189	high	31	31	0	0	low	high	2	No	No
644	2.13	1229	2.45	13181	low	31	31	0	0	low	low	2	Yes	Yes
645	2.71	2838	1.39	9643	low	31	31	0	0	low	low	1	Yes	Yes
646	1.1	742	2.7	9889	low	31	31	0	0	low	low	2	Yes	Yes
647	0.224	742	2.79	9837	low	31	31	0	0	low	low	2	Yes	Yes
648	2.35	538	1.64	6276	low	31	31	0	0	low	low	2	Yes	Yes
649	0.812	915	2.24	6375	low	31	31	0	0	low	low	2	Yes	Yes
650	2.45	143	2.65	24391	high	30	30	0	0	low	low	1	No	Yes
651	0.695	3674	2.17	32343	high	30	30	0	0	low	high	2	No	No
652	4.48	542	3.35	18891	high	30	30	0	0	low	low	2	No	Yes
653	3.24	2534	2.83	13978	high	30	30	0	0	low	high	1	No	No
654	1.76	628	4.77	28334	high	30	30	0	0	low	low	1	No	Yes

655	0.798	0.7	1.75	2772	low	30	30	0	0	low	low	2	Yes	Yes
656	1.42	10.54	2.18	81.94	low	30	30	0	0	low	low	2	Yes	Yes
657	11.08	7.76	1.24	144.66	high	30	30	0	0	low	low	2	No	Yes
658	1.77	5.57	1.1	240.48	high	30	30	0	0	low	low	1	No	Yes
659	1.12	15.64	1.26	799.09	high	29	29	0	0	low	low	2	No	Yes
660	1.38	14.31	1.6	392.48	high	29	29	0	0	low	low	2	No	Yes
661	2.42	85.49	2.9	232.31	high	29	29	0	0	low	high	1	No	No
662	1.94	8.48	1.22	133.22	low	29	29	0	0	low	low	2	Yes	Yes
663	12.71	15.63	2.63	133.98	high	29	16	0	1	low	high	2	No	No
664	1.17	10.2	1.21	59.61	low	29	29	0	0	low	low	2	Yes	Yes
665	0.679	0.71	2.71	95.65	low	29	29	0	0	low	low	2	Yes	Yes
666	1.4	10.58	1.46	205.62	high	29	29	0	0	low	high	2	No	No
667	1.12	0.65	2.96	61.71	low	29	29	0	0	low	low	2	Yes	Yes
668	2.89	8.1	2.71	77.76	low	28	28	0	0	low	low	1	Yes	Yes
669	1.62	71.49	1.21	88.46	low	28	28	0	0	low	low	2	Yes	Yes
670	2.94	20.19	4.76	128.61	low	28	28	0	0	low	low	1	Yes	Yes
671	0.537	6.64	1.42	146.47	high	28	28	0	0	low	high	2	No	No

Table S3: The result of IHC for three types of lung cancer.

ID	T_positive	N_positive	T_intensity	N_intensity	Tumor score	Normal score	Pathology
1	90	0	3	0	270	0	SCLC
2	80	0	3	0	240	0	SCLC
3	90	70	3	2	270	140	SCLC
4	0	0	0	0	0	0	SCLC
5	20	90	3	1	60	90	SCLC
6	80	0	3	0	240	0	SCLC
7	70	0	2	0	140	0	SCLC
8	50	0	2	0	100	0	SCLC
9	70	0	2	0	140	0	SCLC
10	90	0	3	0	270	0	SCLC
11	90	50	3	2	270	100	SCLC
12	80	0	3	0	240	0	SCLC
13	80	0	3	0	240	0	LUAD
14	80	0	3	0	240	0	LUAD
15	90	0	3	0	270	0	LUAD
16	80	0	3	0	240	0	LUAD
17	80	0	3	0	240	0	LUAD
18	90	0	3	0	270	0	LUAD
19	90	0	3	0	270	0	LUAD
20	60	0	3	0	180	0	LUSC
21	90	0	3	0	270	0	LUAD
22	90	0	3	0	270	0	LUAD

23	95	80	3	2	285	160	LUSC
24	70	0	2	0	140	0	LUSC
25	90	70	3	1	270	70	LUAD
26	80	0	3	0	240	0	LUAD
27	90	0	3	0	270	0	LUAD
28	50	0	3	0	150	0	LUAD
29	50	0	3	0	150	0	LUAD
30	90	0	3	0	270	0	LUAD
31	90	0	3	0	270	0	LUSC
32	10	0	2	0	20	0	LUAD
33	90	0	3	0	270	0	LUSC
34	90	0	3	0	270	0	LUSC
35	90	0	3	0	270	0	LUAD
36	90	0	3	0	270	0	LUSC
37	30	0	3	0	90	0	LUAD
38	90	0	3	0	270	0	LUAD
39	90	0	3	0	270	0	LUSC
40	90	0	3	0	270	0	LUSC
41	70	0	3	0	210	0	LUSC
42	60	0	3	0	180	0	LUSC
43	20	0	3	0	60	0	LUSC
44	60	0	2	0	120	0	LUSC
45	80	0	3	0	240	0	LUSC
46	90	0	3	0	270	0	LUSC
47	50	0	3	0	150	0	SCLC
48	60	0	3	0	180	0	LUSC
49	50	0	3	0	150	0	LUAD
50	90	0	3	0	270	0	LUAD
51	90	0	3	0	270	0	LUAD
52	90	0	3	0	270	0	LUAD
53	90	0	3	0	270	0	LUSC
54	90	0	3	0	270	0	LUSC
55	90	0	3	0	270	0	LUSC
56	70	0	2	0	140	0	LUAD
57	90	80	3	2	270	160	LUSC
58	30	0	3	0	90	0	LUSC
59	90	0	2	0	180	0	LUAD
60	90	70	3	2	270	140	LUSC
61	60	0	3	0	180	0	LUSC
62	50	0	2	0	100	0	LUAD
63	50	0	3	0	150	0	LUSC
64	90	0	3	0	270	0	LUAD
65	80	0	3	0	240	0	LUAD

66	90	0	3	0	270	0	LUSC
67	90	0	3	0	270	0	LUSC
68	80	0	3	0	240	0	LUAD
69	80	0	3	0	240	0	LUAD
70	90	0	3	0	270	0	LUAD
71	90	0	3	0	270	0	LUSC
72	90	0	2	0	180	0	LUAD
73	90	70	3	2	270	140	LUAD
74	90	0	3	0	270	0	LUSC
75	90	0	3	0	270	0	LUAD
76	80	0	2	0	160	0	SCLC
77	80	0	3	0	240	0	LUAD
78	90	0	3	0	270	0	LUSC
79	90	0	3	0	270	0	LUAD
80	90	0	3	0	270	0	LUAD
81	90	0	3	0	270	0	LUAD
82	90	0	3	0	270	0	LUAD
83	90	0	3	0	270	0	LUAD
84	90	0	3	0	270	0	LUSC
85	90	0	3	0	270	0	LUAD
86	90	0	3	0	270	0	LUSC
87	90	0	3	0	270	0	LUSC
88	90	0	3	0	270	0	LUSC
89	90	0	3	0	270	0	LUAD
90	90	0	3	0	270	0	LUAD
91	90	0	3	0	270	0	LUAD
92	70	0	3	0	210	0	LUSC
93	50	0	3	0	150	0	LUSC
94	90	0	3	0	270	0	LUSC
95	90	0	3	0	270	0	LUAD
96	90	0	3	0	270	0	LUAD
97	70	0	3	0	210	0	LUAD
98	80	0	3	0	240	0	LUSC
99	80	0	3	0	240	0	LUSC
100	80	0	3	0	240	0	LUSC
101	70	0	3	0	210	0	LUSC
102	70	0	3	0	210	0	LUAD
103	90	0	3	0	270	0	LUAD
104	70	0	3	0	210	0	LUSC
105	80	0	3	0	240	0	LUSC
106	50	0	3	0	150	0	LUSC
107	10	0	3	0	30	0	LUAD
108	90	0	3	0	270	0	LUAD

109	80	0	3	0	240	0	LUAD
110	90	80	3	3	270	240	LUAD
111	90	0	3	0	270	0	LUAD
112	90	90	3	1	270	90	LUAD
113	90	0	3	0	270	0	LUSC
114	90	0	3	0	270	0	LUSC
115	90	0	3	0	270	0	LUSC
116	90	0	3	0	270	0	LUAD
117	80	0	3	0	240	0	LUAD
118	90	0	3	0	270	0	LUSC
119	80	0	3	0	240	0	LUAD
120	90	0	3	0	270	0	LUAD
121	90	0	3	0	270	0	LUAD
122	90	90	3	2	270	180	LUAD
123	90	0	3	0	270	0	LUAD
124	90	0	3	0	270	0	SCLC
125	90	0	3	0	270	0	LUAD
126	60	0	2	0	120	0	SCLC
127	80	0	3	0	240	0	LUAD
128	50	0	2	0	100	0	SCLC
129	90	0	3	0	270	0	LUSC
130	90	0	3	0	270	0	LUAD
131	50	0	1	0	50	0	SCLC
132	70	0	3	0	210	0	LUSC
133	90	0	3	0	270	0	LUAD
134	90	0	3	0	270	0	LUAD
135	80	0	3	0	240	0	LUSC
136	70	0	2	0	140	0	LUAD
137	90	0	3	0	270	0	LUSC
138	80	0	3	0	240	0	LUSC
139	90	0	3	0	270	0	LUSC
140	90	0	3	0	270	0	LUAD
141	90	0	3	0	270	0	LUAD
142	50	0	3	0	150	0	LUSC
143	90	0	3	0	270	0	LUAD
144	90	0	3	0	270	0	LUAD
145	90	0	3	0	270	0	LUSC
146	90	0	3	0	270	0	LUSC
147	80	0	3	0	240	0	LUSC
148	80	0	3	0	240	0	LUAD
149	90	0	3	0	270	0	LUSC
150	90	0	3	0	270	0	LUAD
151	80	0	3	0	240	0	LUSC

152	90	0	3	0	270	0	LUAD
153	80	0	3	0	240	0	LUSC
154	50	0	3	0	150	0	LUAD
155	90	0	1	0	90	0	SCLC
156	80	0	3	0	240	0	LUAD
157	90	0	3	0	270	0	LUAD
158	90	0	1	0	90	0	SCLC
159	20	0	2	0	40	0	LUAD
160	90	0	3	0	270	0	LUSC
161	80	0	2	0	160	0	SCLC
162	80	0	1	0	80	0	LUAD
163	80	0	3	0	240	0	LUAD
164	90	0	3	0	270	0	LUAD
165	90	0	3	0	270	0	LUAD
166	90	0	3	0	270	0	LUAD
167	90	0	3	0	270	0	LUAD
168	90	0	3	0	270	0	LUAD
169	90	0	3	0	270	0	LUSC
170	80	0	3	0	240	0	LUSC
171	80	0	3	0	240	0	LUAD
172	80	0	3	0	240	0	LUAD
173	70	0	3	0	210	0	LUSC
174	90	0	3	0	270	0	LUSC
175	80	0	3	0	240	0	SCLC
176	90	0	2	0	180	0	LUAD
177	70	70	3	2	210	140	LUSC
178	70	0	2	0	140	0	LUAD
179	70	0	1	0	70	0	LUSC
180	10	0	2	0	20	0	LUSC
181	50	0	2	0	100	0	LUAD
182	80	0	2	0	160	0	LUAD
183	90	0	3	0	270	0	LUSC
184	90	0	3	0	270	0	LUAD
185	90	0	3	0	270	0	LUAD
186	80	0	2	0	160	0	LUAD
187	90	0	3	0	270	0	LUAD
188	80	0	3	0	240	0	LUSC
189	80	0	3	0	240	0	LUAD
190	90	0	3	0	270	0	LUSC
191	90	0	3	0	270	0	LUSC
192	90	0	3	0	270	0	LUAD
193	70	0	1	0	70	0	SCLC
194	90	0	3	0	270	0	LUAD

195	90	0	3	0	270	0	LUSC
196	90	0	3	0	270	0	LUAD
197	90	0	3	0	270	0	LUAD
198	90	0	3	0	270	0	LUSC
199	90	0	3	0	270	0	LUSC
200	90	0	3	0	270	0	LUSC
201	70	0	3	0	210	0	LUAD
202	90	0	2	0	180	0	LUAD
203	90	0	3	0	270	0	LUAD
204	90	0	3	0	270	0	SCLC
205	90	0	3	0	270	0	LUSC
206	20	0	3	0	60	0	LUSC
207	90	0	3	0	270	0	LUSC
208	70	0	3	0	210	0	LUSC
209	90	0	3	0	270	0	LUSC
210	90	0	3	0	270	0	LUAD
211	60	0	3	0	180	0	LUAD
212	80	0	2	0	160	0	LUSC
213	80	0	3	0	240	0	LUAD
214	70	0	2	0	140	0	LUSC
215	90	0	3	0	270	0	LUAD
216	80	0	1	0	80	0	LUAD
217	90	0	3	0	270	0	LUAD
218	90	0	3	0	270	0	LUSC
219	90	0	1	0	90	0	LUAD
220	90	0	3	0	270	0	LUSC
221	80	0	3	0	240	0	LUAD
222	70	0	3	0	210	0	LUAD
223	90	0	3	0	270	0	LUAD
224	70	0	1	0	70	0	LUSC
225	90	0	3	0	270	0	LUAD
226	90	0	2	0	180	0	LUSC
227	90	0	3	0	270	0	LUSC
228	90	0	3	0	270	0	LUAD
229	70	0	3	0	210	0	LUAD
230	90	0	3	0	270	0	LUAD
231	90	0	3	0	270	0	LUAD
232	90	0	2	0	180	0	LUAD
233	50	0	2	0	100	0	LUAD
234	90	0	3	0	270	0	LUSC
235	90	0	3	0	270	0	LUSC
236	90	0	3	0	270	0	LUAD
237	90	0	3	0	270	0	LUSC

238	70	0	3	0	210	0	LUSC
239	30	0	3	0	90	0	LUAD
240	80	0	2	0	160	0	LUAD
241	70	0	3	0	210	0	LUSC
242	90	0	3	0	270	0	LUSC
243	90	0	3	0	270	0	LUSC
244	90	0	3	0	270	0	LUAD
245	90	0	3	0	270	0	LUAD
246	50	0	2	0	100	0	LUAD
247	90	0	3	0	270	0	LUSC
248	90	0	3	0	270	0	LUSC
249	80	0	3	0	240	0	LUAD
250	90	0	3	0	270	0	LUAD
251	30	0	2	0	60	0	LUAD
252	20	0	3	0	60	0	LUAD
253	90	0	3	0	270	0	LUSC
254	70	0	2	0	140	0	LUAD
255	80	0	1	0	80	0	LUAD
256	70	0	3	0	210	0	LUSC
257	90	0	3	0	270	0	LUSC
258	90	0	3	0	270	0	LUSC
259	90	0	3	0	270	0	LUSC
260	90	0	3	0	270	0	LUSC
261	90	0	3	0	270	0	LUSC
262	90	0	3	0	270	0	LUSC
263	90	0	3	0	270	0	LUSC
264	90	0	3	0	270	0	LUAD
265	90	0	3	0	270	0	LUAD
266	90	0	2	0	180	0	LUSC
267	90	0	1	0	90	0	LUAD
268	90	0	3	0	270	0	LUSC
269	90	0	3	0	270	0	LUAD
270	90	0	3	0	270	0	LUAD
271	90	0	3	0	270	0	LUAD
272	90	0	1	0	90	0	LUAD
273	90	0	3	0	270	0	LUSC
274	90	0	3	0	270	0	LUAD
275	90	0	3	0	270	0	LUAD
276	90	0	3	0	270	0	LUSC
277	70	0	3	0	210	0	SCLC
278	90	0	3	0	270	0	SCLC
279	70	0	3	0	210	0	SCLC
